



**Gestton**

**CAMERA TRACKING CONFERENCE SYSTEM**

**EG-6620M**

**【USER MANUAL】**

Thank you for using EG series conference system. Please read below instruction carefully before using this system.

**Caution**

- .Please do not scratch/bend/twist/pull/heat the power cable, otherwise, it may cause damage to the power cable & even cause fire or electric shock.
- .Please do not open the casing, otherwise it may cause electric shock. If this equipment needs checking/maintenance or repair, please contact our representative.
- .Please do not retrofit this unit, otherwise, it may cause fire or electric shock.
- .Please do not touch the power plug with your hands wet, otherwise, it may cause electric shock.
- .If the power cable is worn out (broken or core wire exposed), please contact our representative to get the spare part for replacement. It may cause fire or electric shock using the worn out power cable.
- .Please disconnect the power cable first & then disconnect all the connecting cable before you move this equipment.
- .If this unit is not using for a long time, please remove the power plug from the AC socket to avoid unexpected fire.

## Contents

1.Functions. . . . .	3
2.Front Pannel. . . . .	4
3.Rear Pannel. . . . .	4
4.Chairman Unit. . . . .	5
5. Delegate Unit. . . . .	5
6. System Connection. . . . .	6
7. Touch-screen Operation Instruction. . . . .	7
A.Conference Control. . . . .	7
B.Camera Tracking. . . . .	11
C.Audio Recording. . . . .	14
D.System Setup. . . . .	16
E.QR Code. . . . .	16
F.Restart. . . . .	17
8.Webpage Operation Instruction. . . . .	17
A.Unit Addressing. . . . .	19
B.Conference Setup. . . . .	20
C.Camera Tracking. . . . .	21
D.Conference Control. . . . .	23
E.Setup System. . . . .	26
F.System Password. . . . .	26
G.Safe Logout. . . . .	27
9.Connecting with the Amplifier. . . . .	27

In this manual, administrator can add user to system and change password. The name of administrator is fixed as admin, default password is 123456. Only administrator is authorized to make changing in this section. As the host can be login by multiple devices at a time, thus default administrator password should change before use, relative users should add on the system group and distribute to corresponding personnel.

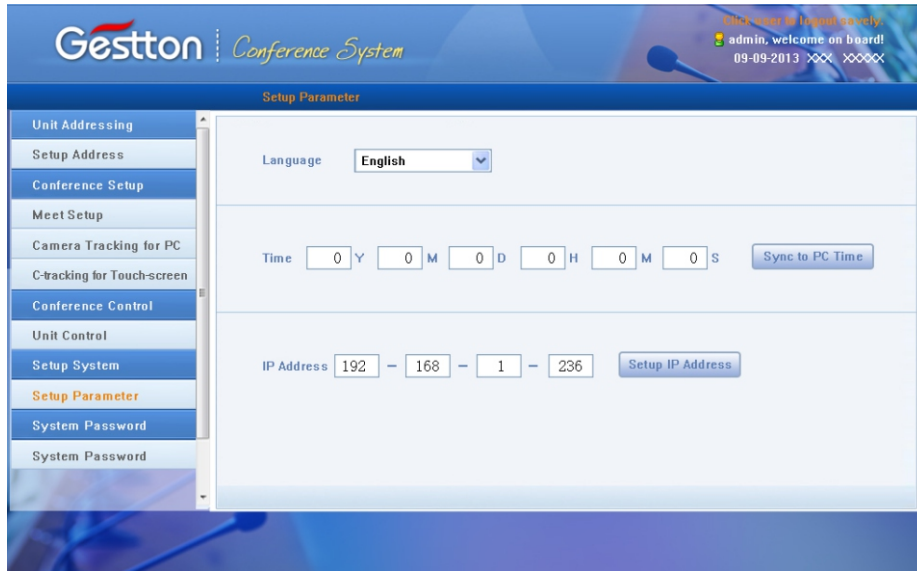
**G. Logout system**

Click “admin” located at upper right corner to logout system:

**9.Connect Amplifier**

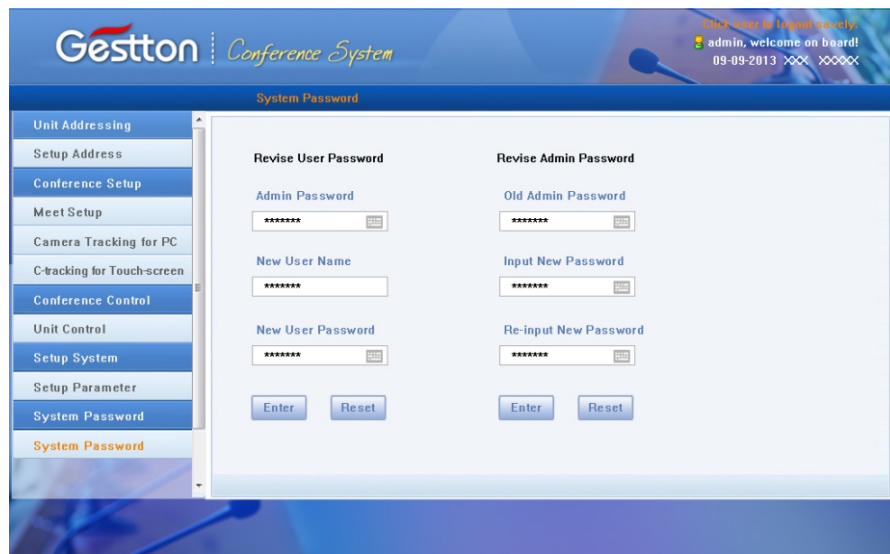
Adjust the volume of amplifier to the minimum level and line out at 20. Testing personnel need to speak toward the units while adjust the volume to an appropriate level. The position of speaker installation is important, avoid to place microphone units toward speaker in case of howling effect occur.

## E.Setup System



Setup system time and IP address, system needs to restart after new IP address is applied.

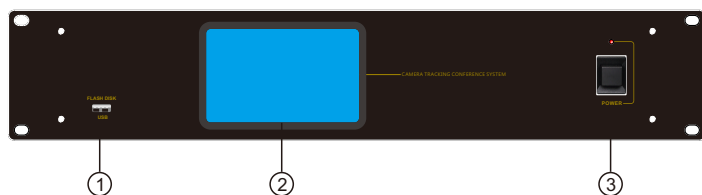
## F.System Password



## 1.Main Feature

- ① Fully digital circuit design;
- ② Main controller adopts TFT capacitive touch-screen which makes friendly interface & easy operation.
- ③ With inserted control webpage, system can be controlled by portable devices like mobilephone/Ipad/PC. This can be done without software.
- ④ With TCP/IP internet port to realize long-range control. It can also be connected to central controller.
- ⑤ With RS232 port & USB port for setting system parameter.  
Audio recording to thumb drive directly. The audio file in the thumb drive can be played.  
Maximum 110 microphone units can be connected to one controller.  
Maximum 15 main controllers can be cascaded.
- ⑧ Support pelco P/D, YAAN, SONY EVI-D70 camera protocol.
- ⑨ Support 6-in-1-out video switcher. Maximum 6 cameras.
- ⑩ Maximum 5 groups of preset point for EVI-D70 can be saved to the system.
- ⑪ Camera protocol can be edited via software by the user.
- ⑫ Meet mode: voice control, FIFO, chairman mode, all on mode.
- ⑬ Mic unit can be set time off or auto off.
- ⑭ With canon audio output & RCA jacks for line-in/out, Tel-in/out.
- ⑮ Mic unit is free from mobile interference & with hot-plug function.

## 2 Front Panel of the Main Controller



1. USB Recording Port

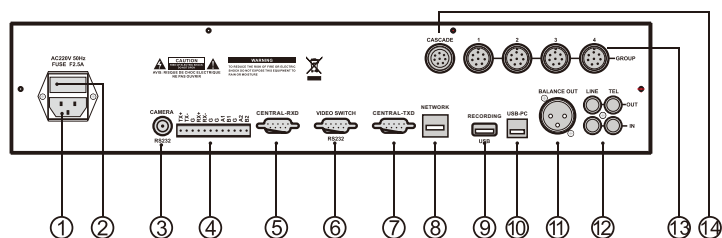
2. TFT Touch-screen Display

Display the system configuration & working condition.

3. Power Switch

Turn on/off power for main controller

## 3. Rear Panel of the Main Controller



1. AC power input socket & fuse holder. Power 220V.

2. Fuse holder: 2.5A fuse.

3. Camera connection port, via RS232.

4. Camera connection port, via RS485/RS422.

5. RS-232 port for PC.

6. RS232 port, for HDMI video switcher.

7. RS-232 port for central controller.

8. TCP/IP network port: connect system with network to realize remote control via mobilephone/Ipad/PC.

9. USB port for audio recording.

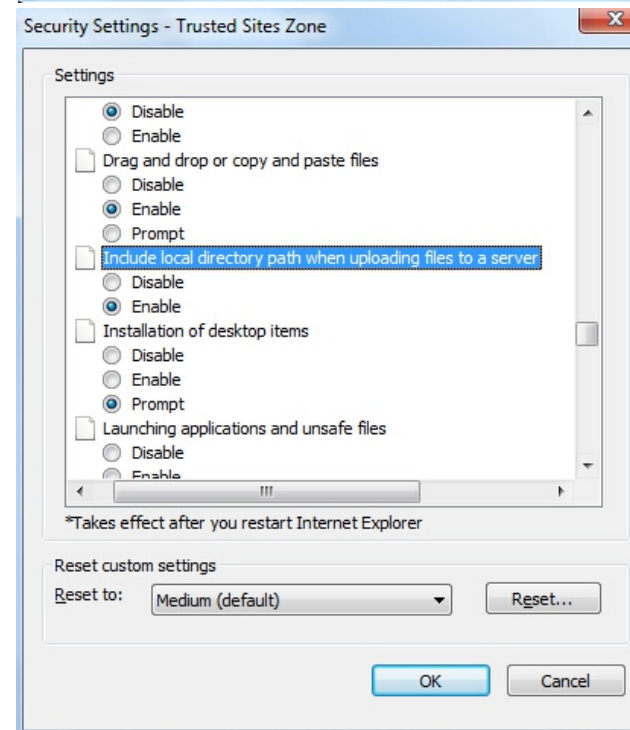
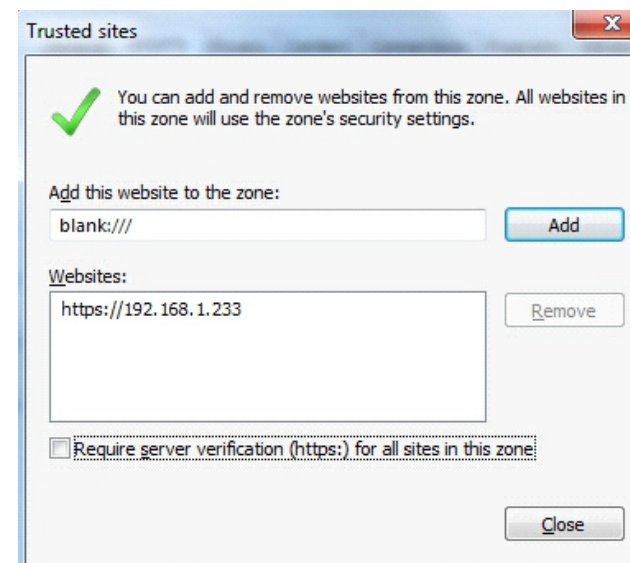
10. USB port for PC.

11. Balance Out.

12. Line-in/out & Tel-in/out

13. 4 ports for maximum 110 mic units totally.

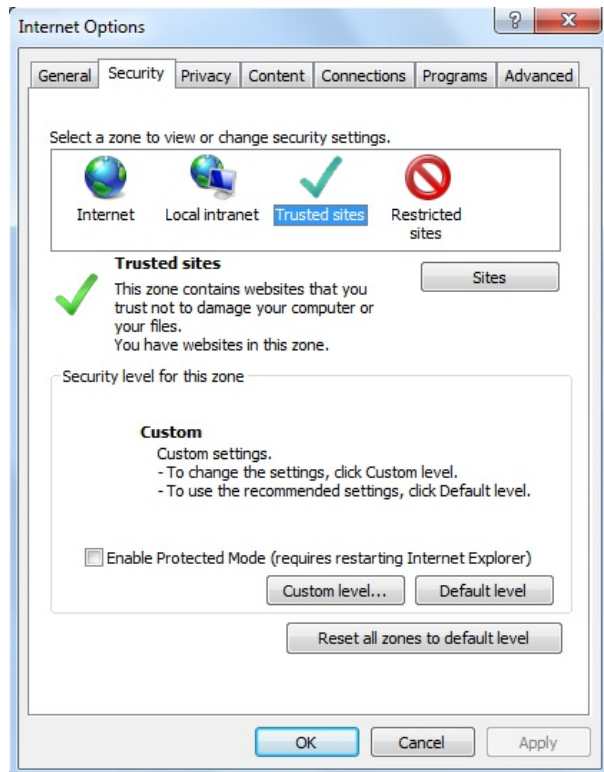
14. Cascade port: for maximum 15 main controllers.



In this section, operator can key in the name of relevant attendees by clicking corresponding unit number, then click “Save to device” to save as default name list. When exit this page and go back this section, name list will not show automatically until clicking “Load name list” to retrieve default name list. Firstly, creating a specific text file in computer, select it from file path column, to allow preset name list store to or load from connected computer by clicking button “Save to local” or “Load from local” To enable this function, operator should follow below steps to configure computer:

**Step A:** Configure internet explorer setup:1)Tools 2)Internet Options 3)Security 4)Enter host IP into trusted sites; Uncheck “Require server verification (https: )for all sites in this zone”

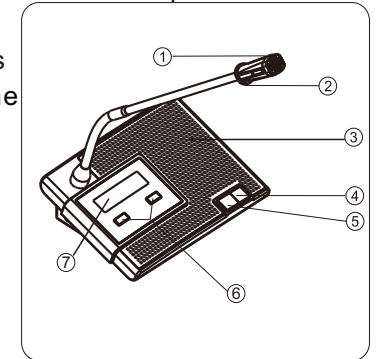
Note: If user is prompted with error, step B should be followed after step A:



**Step B:** Configure internet explorer setup:1)Tools 2)Internet Options 3)Security 4)Custom level.Enable “Initialize and script ActiveX controls not marked as safe for scripting”and “Include local directory path when uploading files to a server”

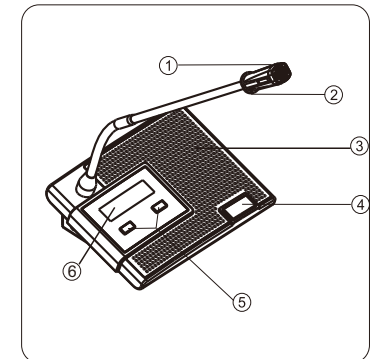
#### 4. Chairman Unit

1. Mic capsule: to pick up the voice of speaker & send it to amplifier
2. Mic light loop: to indicate the working condition of the microphone
3. Built-in loudspeaker
4. Priority button: to turn off all the delegate units
5. Mic button: to turn on or turn off the microphone
6. Headset & built-in speaker volume control
7. Display

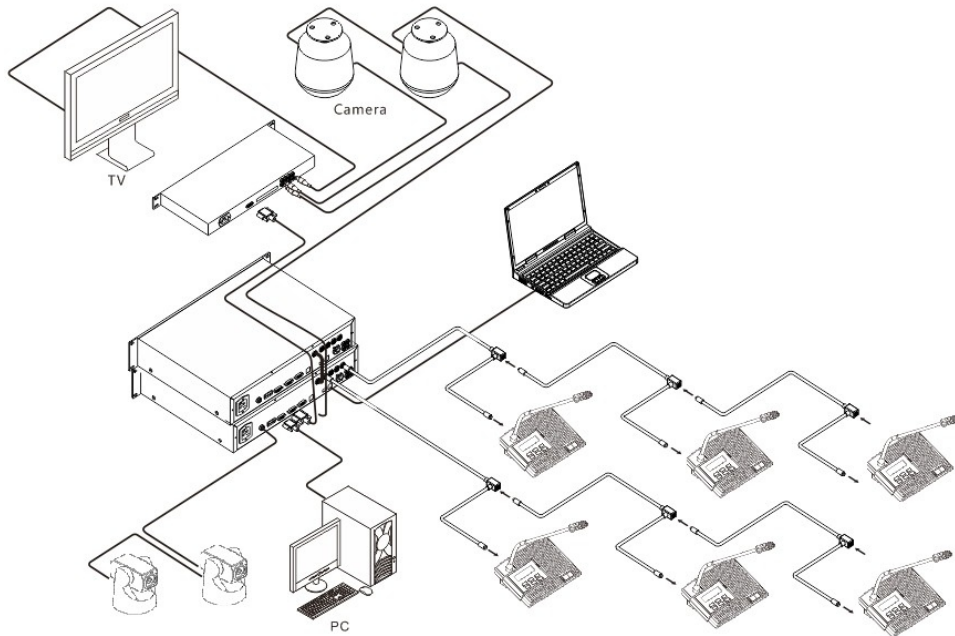


#### 5. Delegate Unit

1. Mic capsule: to pick up the voice of speaker & send it to amplifier
2. Mic light loop: to indicate the working condition of the microphone
3. Built-in loudspeaker
4. Mic button: to turn on or turn off the microphone
5. Headset & built-in speaker volume control
6. Display



## 6 System Connection



### Note:

The new installed system can not be used until every unit has been edited address. Please refer to menu “Edit Address”.

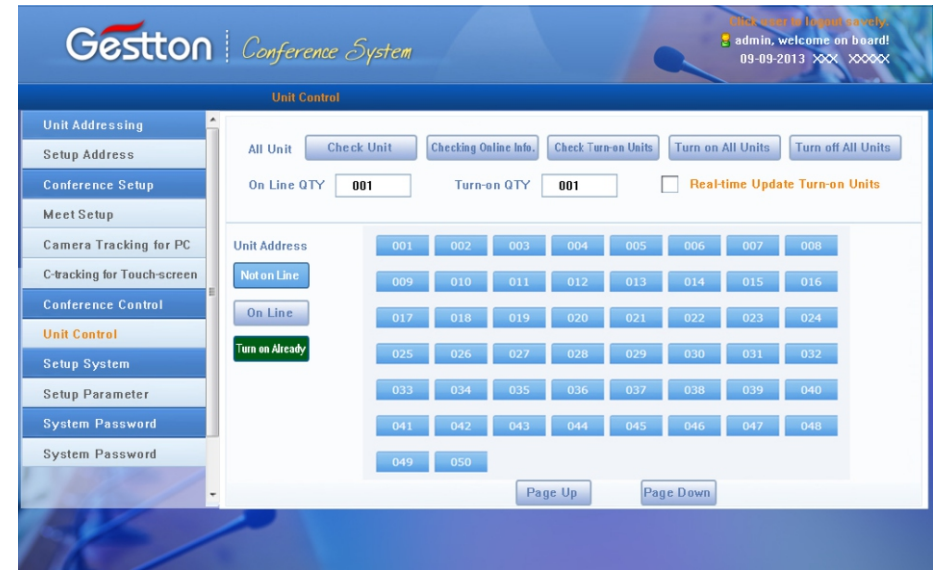
Please make sure to use the required power supply.

Avoid using this system in dirty or dusty environment.

Avoid using this system in high humidity environment.

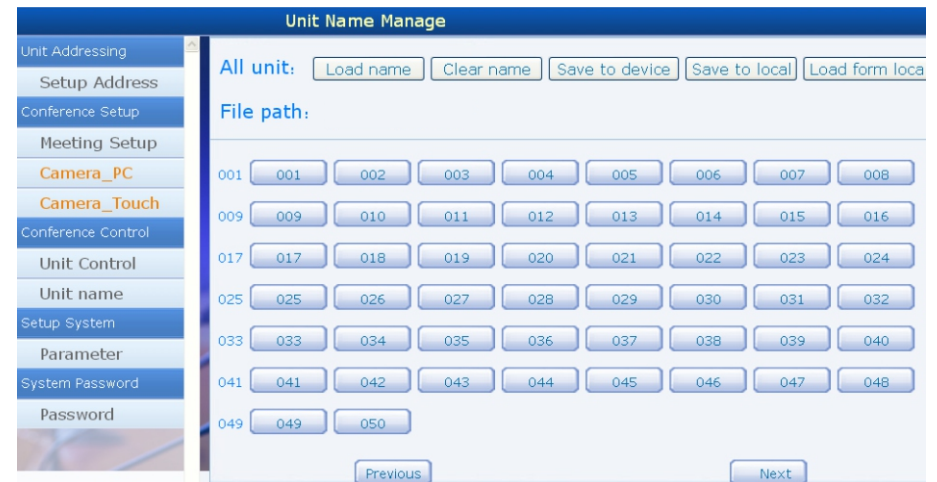
## D.Conference Control

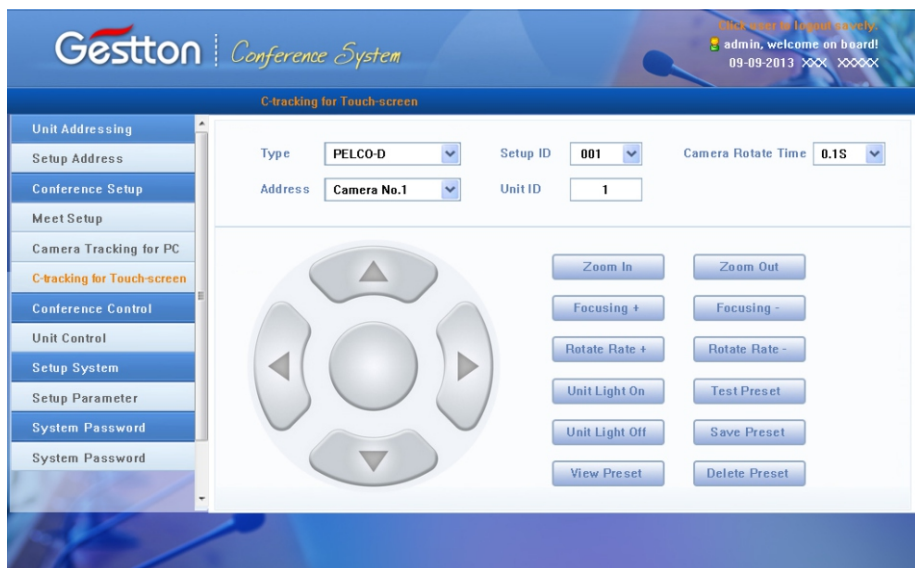
### Conference Unit Control



Units can be controlled individually in this section. Unit status is indicated in green when it is in use, click corresponding online unit number to turn unit on or off.

### Unit Name List Management





Camera Type: Pelco-D/Pelco-P/Sony(baud rate:9600)/Yaan(baud rate:4800);

Camera address: Select needed camera to operate.

Different ID should be allocated when more than one main controller are cascaded. When only one main controller is in use, main controller ID should be set as 1.

Setup Preset Point:

For example, the camera is set to focus on the position of unit number 1, enter desired preset number (here is 1) at the unit column, click button "Save Preset" to save setup. Following the routine to complete the rest preset point setup. System default preset point number is zero (0), when all units off, camera will set to track this specific position, normally it is the full view of the meeting room. When clicking "Unit Light On", the light loop of currently operated units will flash during preset point setup, to allow operator to focus on the unit easily. After saving the setup, clicking button "Test Preset" to check if the preset point of specific unit is set correctly.

## 7. Operation for Touch-screen

### A. Conference Control



Click Conference Control to enter below interface:

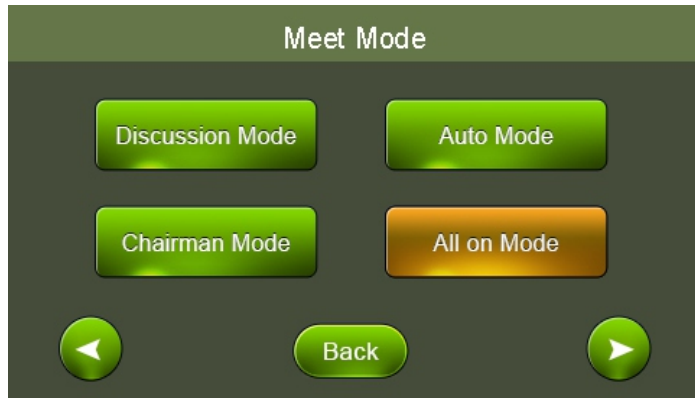


**Queue Mode:**

FIFO & LIFO: Select first in first out or last in first out for the queue.  
Sound Control(ON) & Sound Control(OFF): to turn ON/OFF sound control function. If click sound control(ON), mic unit will be turned on when speaking to the mic.



Click “back” to go back, click  to go to next page.



Meet Mode:

Discussion Mode: Camera tracks the last turned on unit.

Auto Mode: Camera tracks the speaking unit.

Chairman Mode: Only chairman unit can be turned on.

All On Mode: All the units can be turned on. No limitation for speaking QTY.

Click “back” to go back, click  to go to next page as below:



Priority Setup: Manual Recover, Auto Recover

Manual Recover: Delegate units will be off when pressing the chairman priority once. Delegate units need to be turned on manually by pressing the ON/OFF button.

Auto Recover: Delegate units will be off when long pressing the chairman priority button. Delegate units will be on again when releasing the priority button.

Auto Off: to turn off the microphone automatically if the chairman or delegate do not speak in certain time. 0S means this function is not activated.

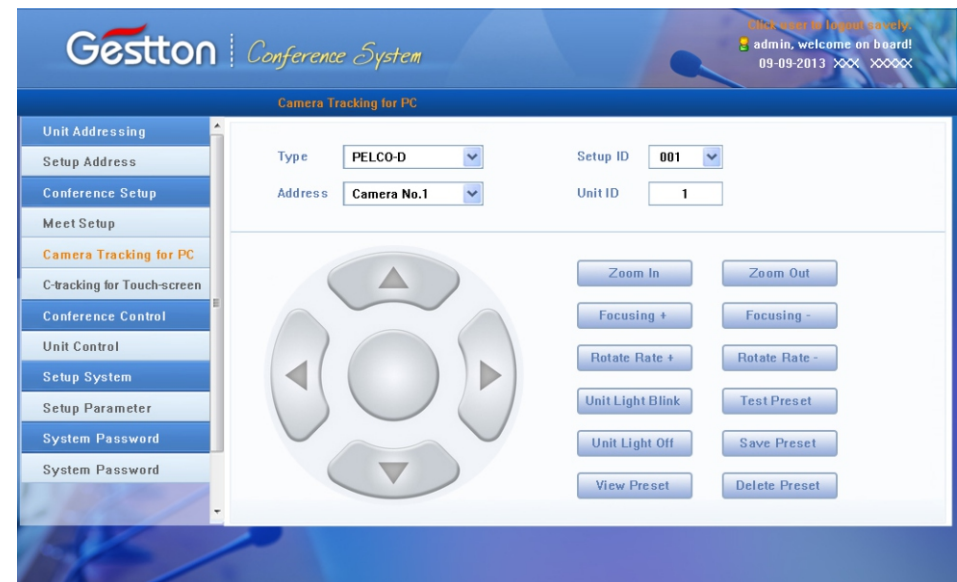
Time Off: to turn off the microphone compulsively by the set certain time.

Line In: adjust line in volume

Line Out: adjust line out volume

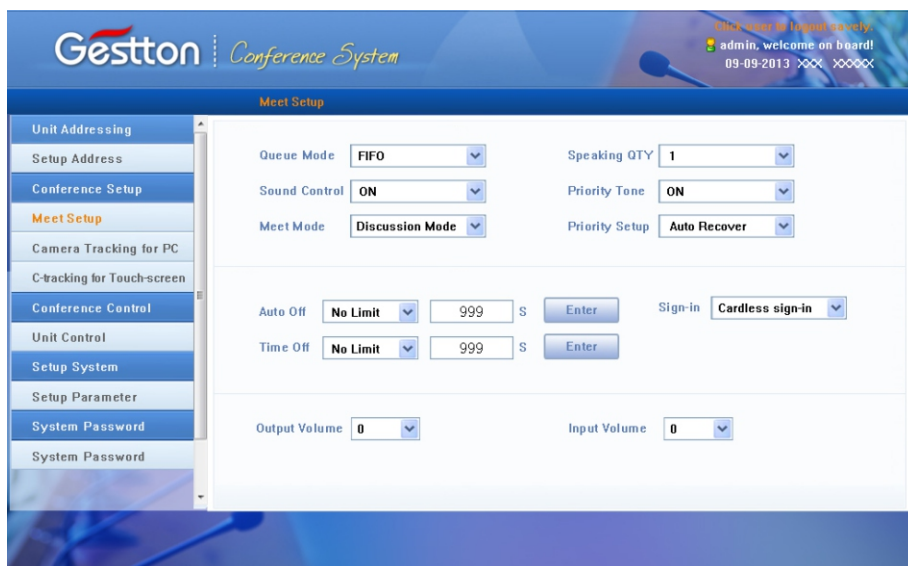
### C. Camera Tracking

In this section, manual offered in computer version and touch screen version for different platforms use purpose. Touch screen sensitivity adjustment was provided in touch screen version.



## B. Conference Setup

Various parameters can be set in conference setup manual as below:



FIFO & LIFO: Select first in first out or last in last out for the queue.

Speaking QTY: To set the limitation for speaking units QTY.  
 Sound Control(ON) & Sound Control(OFF): to turn ON/OFF sound control function. If click sound control(ON), mic unit will be turned on automatically when speaking toward the mic.

Meet Mode:

Discussion Mode: Camera tracks the last turned on unit.

Auto Mode: Camera tracks the speaking unit.

Chairman Mode: Only Chairman unit can be turned on.

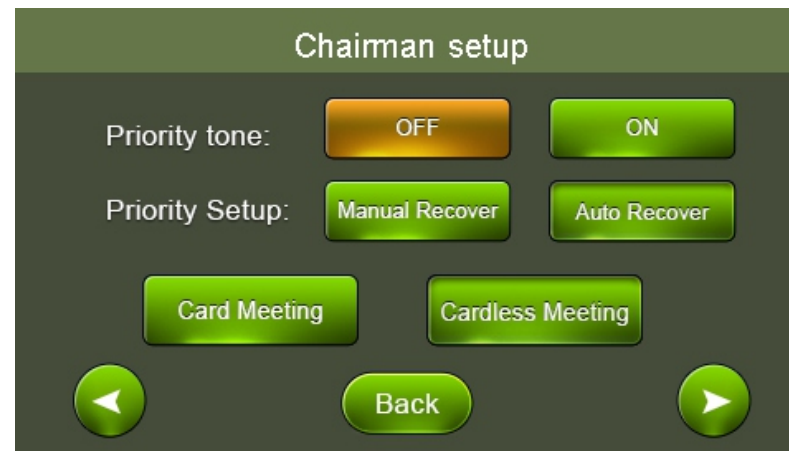
All On Mode: All units can be turned on. No limitation for speaking QTY.

Chairman QTY: To set the limitation QTY for chairman unit.

Speaking QTY: To set the limitation for speaking units QTY.

Auto Off: To turn off the microphone automatically if the chairman or delegate is not operated in certain time. 0S means this function is unavailable.

Time Off: to turn off the microphone compulsively by the set certain time.



Click "back" to go back, click  to go to next page as below:

Priority Tone: To play a tone when pressing the chairman priority button.

Priority Setup: Manual Recover, Auto Recover

Manual Recover: Delegate units will be off when pressing the chairman priority once. Delegate units need to be turned on manually by pressing the ON/OFF button.

Auto Recover: Delegate units will be off when long pressing the chairman priority button. Delegate units will be on again when releasing the priority button.

Card Meeting/Cardless Meeting: When the mic units adopt IC card port, this is to set the requirement of meeting with IC card or not.

Click “back” to go back, click  to go to next page as below:



### Control Unit

All Unit: This is to control all the unit in the main controller.

Off: Turn off all the units.

On: Turn on all the units(Note: this can only be carried out under “All On Mode”.

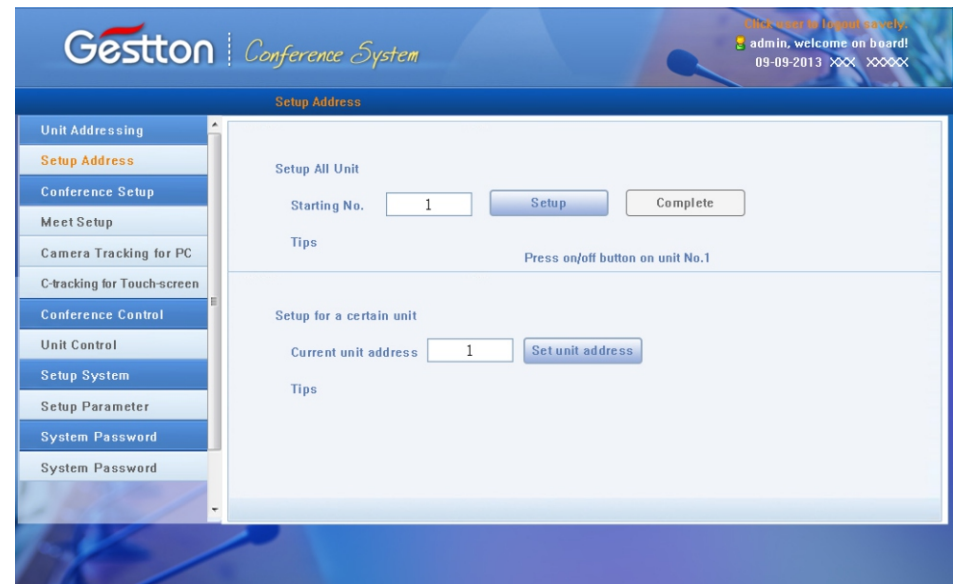
Certain Unit: Turn on/off a certain unit by the related unit number.

Certain Unit Addressing: Addressing for additional unit. For example, when there are 100 units for the system, input “101” & connect a new unit to the system then click "Setup". The new unit address will be “101” accordingly.

Note: All the units' cables must be disconnected when setting.

All Unit Addressing: Addressing all unit by entering a starting number. For instance starting from number 1,click “setup”, by pressing the turn on button on each unit, the units will be set in default subsequent number. The first one is unit number 1, followed by unit number 2, unit number will increase in an ascending order till all units are set, and reboot main controller. **(Normally the process of unit addressing will be done prior to meeting)**

### A.Unit Addressing



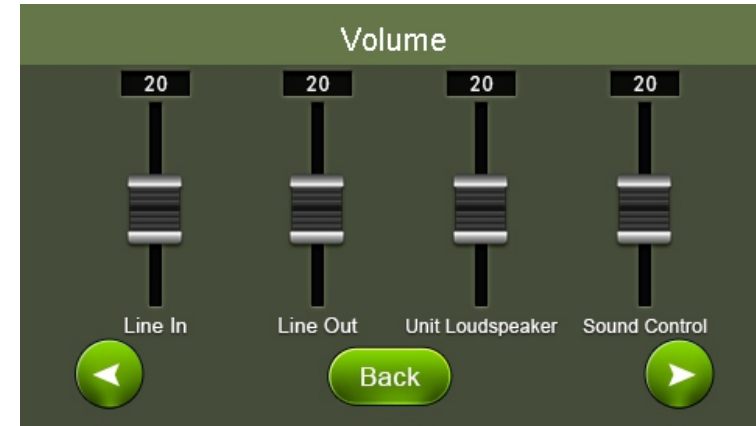
All Unit Addressing: Addressing all unit by entering a starting number. For instance starting from number 1,click “setup”, by pressing the turn on button on each unit, the units will be set in default subsequent number. The first one is unit number 1, followed by unit number 2, unit number will increase in an ascending order till all units are set, and reboot main controller.

Certain Unit Addressing: Addressing for additional unit. For example, when there are 100 units for the system, input “101” & connect a new unit to the system then click Setup. The new unit address will be “101” accordingly. Note: All the units' cables must be disconnected when setting.

**(Normally the process of unit addressing will be done prior to meeting)**



User name: admin, default password:123456. ( User will log off the system automatically after 10 minutes idle)

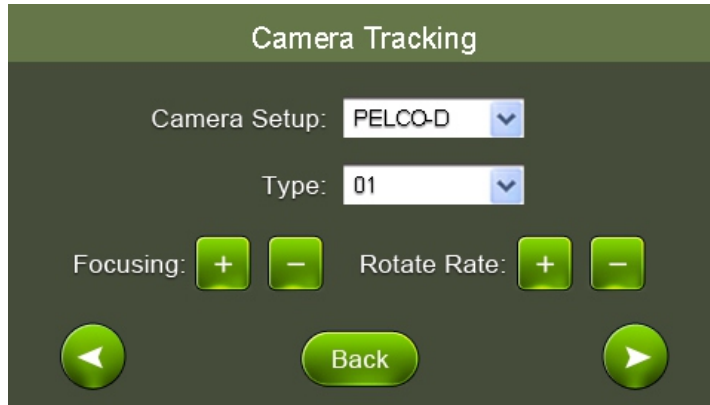


Volume Control: To adjust volume of audio input and output, including Line in/Line out/Unit speaker or headset/Voice control. (When voice control function or limited speaking time mode is activated, the volume of unit voice control is not allowed setting to the minimum level)

## B.Camera



Click "Camera" to setup camera tracking parameter:



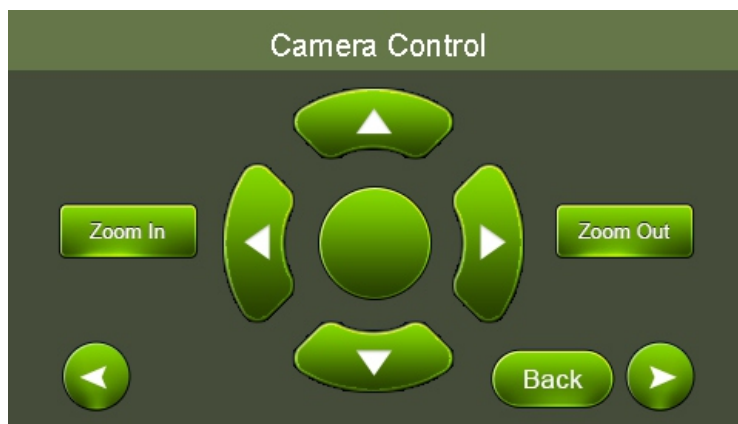
Camera type: Pelco-D/Pelco-P/Sony(baud rate:9600)/Yaan(baud rate:4800);

Address: Select needed camera to operate.

Focusing: Focus range, the camera will adjust automatically, manual operation can be applied when needed.

Rotate Rate: Rotation speed of the camera.

Clicking "back" to return last page, click left cursor to move backward or right cursor to move forward to next page as below:



## F. System Restart



Clicking "Restart" to restart the host.



## 8. Webpage Operation Instruction

Set host's IP address in the same network segment with computer devices. For instance, when host's IP set as 192.168.1.236, user should key in the IP address as above in explorer to login website operation system.

#### D. System setup



Clicking “System Setup” to setup language, IP address, time and main controller ID.



Different ID should be allocated when more than one main controller are cascaded. When only one main controller is in use, main controller ID should set as 1. Default settings, set to restore the factory settings, all the parameters of the host will be restored to factory parameters.

#### E. Quick response code

By using the scanning software of portable devices to scan the generated QR code to instantly access the webpage operation system.

By clicking different direction button to control the movement of camera, zoom in or zoom out button is used in specific object focusing.



#### Setup Preset Point:

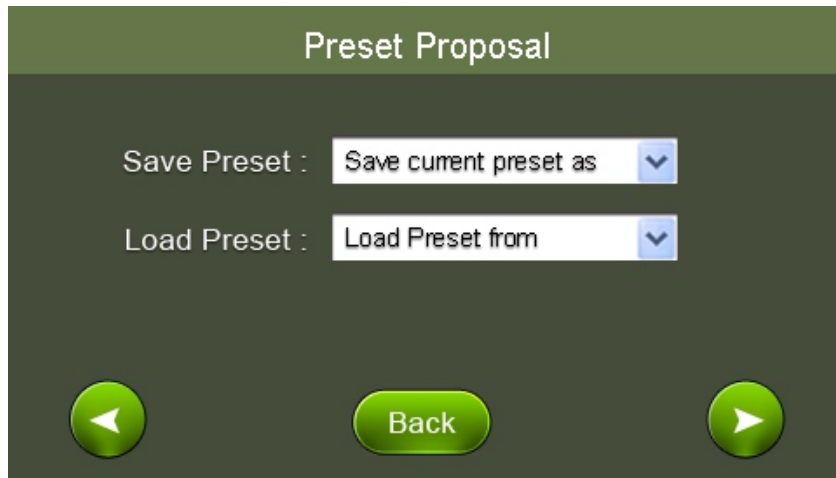
For example, the camera is set to focus on the position of unit number 1, enter desired preset number (here is 1) at the blank, click button “save preset” to save setup. Click left cursor to go back previous page to setup the rest of unit camera tracking position by following the same operation. System default preset point number is zero (0). when all units are off, camera will set to track this specific position, normally it is the full view of the meeting room.

The light loop of relative units will flash during preset point setup, to allow operator to focus on specific unit easily. After saving the setup, clicking button “Test preset” to check if the preset point of specific unit is set correctly.

Preview preset: To check all set preset point of units

Delete all preset point: To delete all tracking point of set units

Clicking “back” to return last page, click left cursor to move backward or right cursor to move forward to next page as below:



When all units are set, it can be stored at this step as a proposal, multiple proposals can store and retrieve when needed.

### C. Recording



Press “Strat” to record during the meeting, thumb drive should be inserted to the recording port at rear side of main controller to store voice data.

The page of recording:



Audio recording pause:



The page of record playing:

