



Prestel MN-15-17-19-22



Motorized Retractable Monitor
+motorized MIC

USER MANUAL

User's Manual of LCD Monitor Lift

(LCD Monitor Lift with FHD Screen & Motorized Microphone)

Welcome to use our Boente LCD monitor lift, please read the manual seriously before used.

Items List:

1, LCD monitor lift with FHD screen(or with microphone) 1 pcs 2, Power line 1 pcs 3, Remote control 1 pcs
4, XLR cable 1 pcs

Kindly contact with us if missed above items.

Introduction:

Ultra-thin LCD monitor lift screen is advance integration conference equipment which made of aluminum alloy material, integrated with 15.6/17.3/18.5 /21.5 inch full FHD screen and conference system microphone, the screen and microphone driving separately by the monitor lift, screen and microphone are control independently form the conference table although they are in the same lift case.

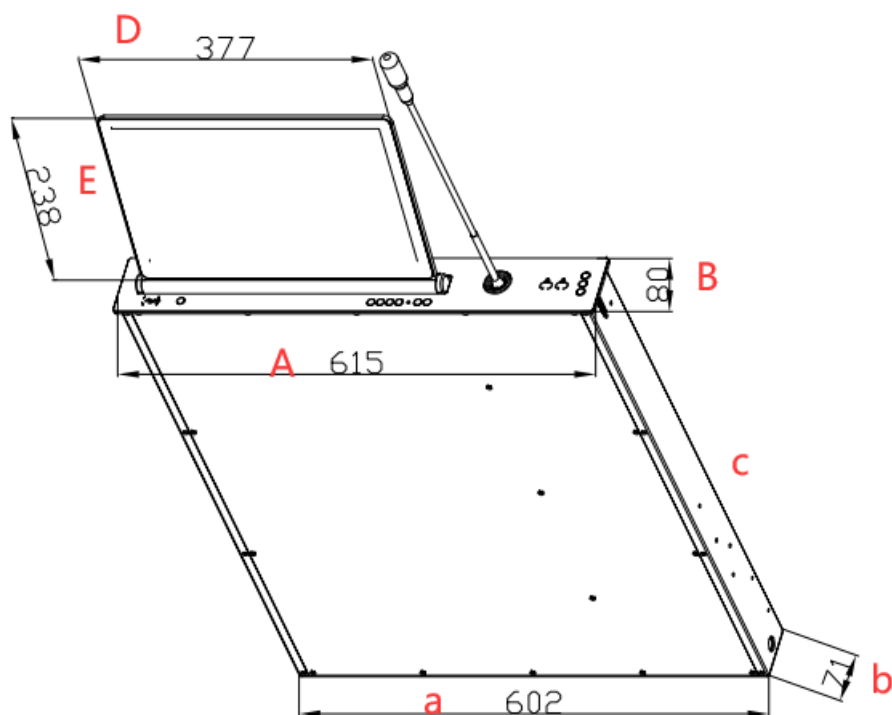
Once meeting is over, the screens and microphone go down automatically until hidden into table, then it will be power off automatically to protect the screen and microphone.

It is widely use in conference system, video conference system, tv conference system, financial analyzing system,advanced office system,lecture and training room with conference table& computer desk,etc.

Feature:

1. Full aluminum alloy finish, corrosion resistant, wear-resistant,smooth surface and not easy to scratch.
2. The monitor and microphone driving synchronization by the lifting mechanism, supply a prefect solution for Conference video audio system
3. Ultra thin Design, only 8cm width of whole lift product
4. Motorized by tank chain and mechanical gear, good quality and smooth and quiet when working
5. Hidden design to save more space and makes a modern office environment
6. Screen could be overturn to 0-30 degree angle to make prefect viewing angle for users
7. Virtually Silent working with excellent working life.
8. Works smoothly and quietly. Low noise which less than 30db
9. Protecting function of LCD monitors by cutting the electricity off automatically
10. Control system: Touch Switch, RF remote control, RS232 AND rs 485 central control.
11. Power plug and voltage could be changed according to user's requirement

Technical Parameter:



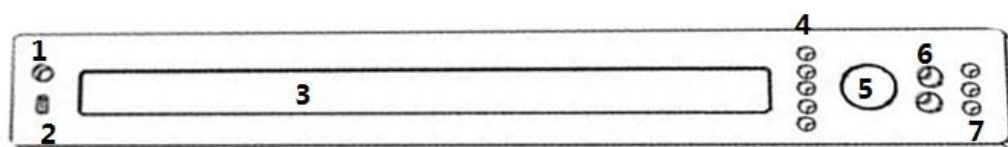
Product Size:

Model No.	Size (inch)	Panel Size (A*B) mm	Case Size (a*b*c) mm	Monitor Size (D*E) mm
15.6	15.6	615*80	602*71*730	377*238
17.3	17.3	655*80	643*71*730	418*259
18.5	18.5	680*80	667*71*730	488*280
21.5	21.5	765*80	752*71*730	528*327

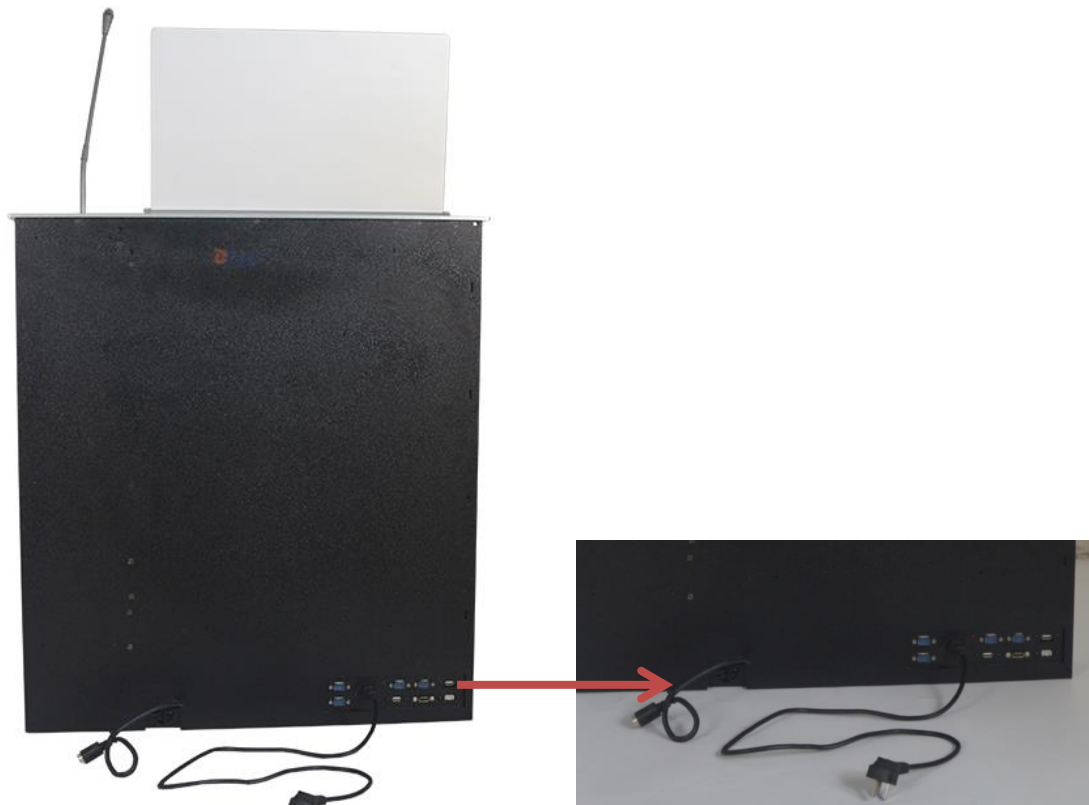
Model No.	15.6	17.3	18.5	21.5
Material	Aluminum alloy	Aluminum alloy	Aluminum alloy	Aluminum alloy
Panel Size	615*80mm	655*80mm	680*80 mm	765*80 mm
Panel Thickness	5mm/1.8mm	5mm/1.8mm	5mm/1.8mm	5mm/1.8mm
Box Size	602*71*730mm	643*71*730mm	667*71*730mm	752*71*730mm
Suggest Cutout Size	604*73 mm	645*73mm	669*73mm	754*73mmm
Monitor	15.6 inch FHD screen	17.3 inch FHD screen	18.5 inch HD screen	21.5 inch FHD screen
Monitor format	16:9	16:9	16:9	16:9
Resolution ratio	1920*1080	1920*1080	1366*728	1920*1080
Pitch Angle	20 degree	20 degree	20 degree	20 degree
Adjustable angle	0-30 degree	0-30 degree	0-30 degree	0-20 degree
Microphone	conference system mic	conference system mic	conference system mic	conference system mic
Color	Black/Sliver	Black/Sliver	Black/Sliver	Black/Sliver

Interface	HDMI+RS232 I/O+USB+XRL	HDMI+RS232 I/O+USB+XRL	HDMI+RS232 I/O+USB+XRL	HDMI+RS232 I/O+USB+XRL
Voltage	110V,220V,240V	110V,220V,240V	110V,220V,240V	110V,220V,240V
Power	20~25W	20~25W	20~25W	20~25W
Microphone Feature	Automatic straighten microphone up function			
Running Way	Tube motor with rack driving			
Control Way	Touch switch/wireless remote/rs232 I/O central control			
Feature	screen + microphone motorized Lift Notes: monitor & Mic lift up/down together			

Machine Function Introduction:

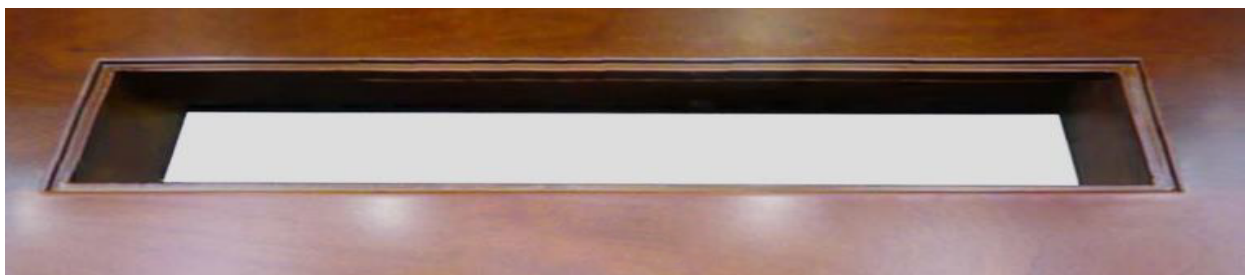


Position	Name	Function
1	PC switch	Power computer on/off
2	USB port	For USB data, mouse
3	Monitor	15.6, 17.3, 18.5 21.5 inch screen
4	Front	Monitor move forward
	Back	Monitor move back
	Stop	Monitor and microphone stop lifting
	Down	Monitor and microphone move down
	Up	Monitor and microphone go up
5	Microphone	Conference system microphone
6	Microphone control	Microphone on/off switch



Name	Function
Power port	For power connecting
Indicator light	Machine working indicator
RS232	For central control connecting
USB port	Top panel USB connecting
HDMI	HDMI connect by screen
XRL port	For Microphone input
Another USB port	For touch screen connecting

Installation:





1, Confirm the installation place on the table, make the cut out size based on real product or drawing.

2, Charge the power to confirm the LCD monitor lift is workable.

3, Put the LCD monitor lift into the hole of the table carefully

4, Connect all wires which are necessary.

VGA/HDMI for video input, USB for data input or touch screen, RS232 for central control, Colorful cable coil for computer switch extension cable (Red & black for LED, Yellow & green for switch)

5, Start monitor cabling for conference system.

Control System :

1, Switch button

2, RF remote control

3, RS232/RS485 control

B, RF remote control

LCD monitor lift supplied with remote control which had set up the signal to control the one lift or all lifts. Please follow up steps to re-set up the signal if remote control isn't work.

Set up signal of remote control

1, Turn the LCD monitor lift on, press the UP&STOP button at the same time in 2-3 seconds.

2, The indicator light of machine start to flicker under frequency of 1pcs/second.

A, Switch control

There is stop, up and down, forward and back buttons on the top surface of machine.

Press UP button, the monitor will pop up form the desktop. When the monitor reaches the top, then monitor will automatic tipped to 20 degrees. And the monitor will turn on automatically.

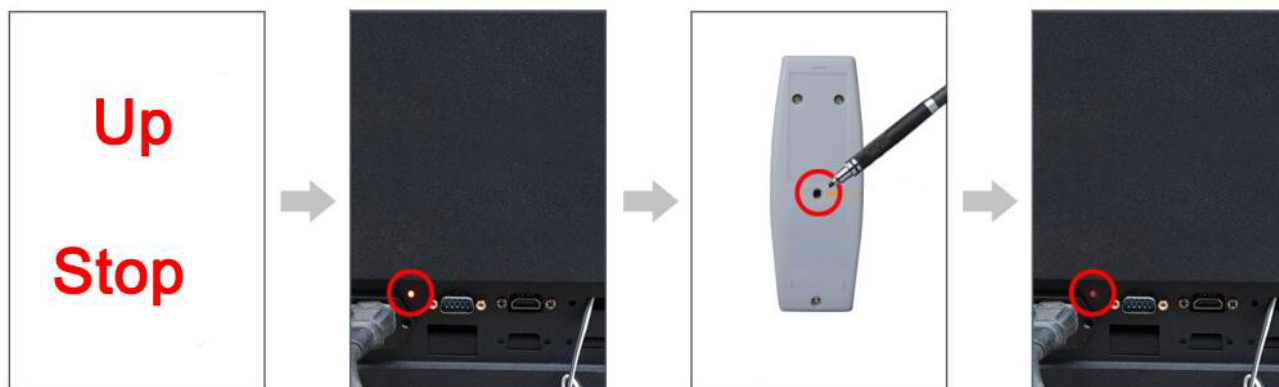
Forward and back buttons is to adjust the title angle from 0 to 30 degree.

Press DOWN button, the monitor will back forward to 0 degrees and start to go down until hidden into the desk . When the monitor reach the bottom, the monitor will turn off automatically.

Press Stop button, the monitor will stop going up or down during working.

Stop/up/down button for control microphone independently.

- 3, Use pan to click twice of “login” button (on the back middle of remote control) in 5 seconds
- 4, The indicator light of machine stop flickering.
- 5, Setting the signal succeed , press the up/down/stop of remote control to test working or not.



Cancel signal of remote control

- 1, Turn the LCD monitor lift on, press the STOP button in 2-3 seconds.
- 2, The indicator light of machine start to flicker under frequency of 1pcs/second.
- 3, Loosen the pressing of STOP button, then press STOP button again.
- 4, The indicator light of machine stop flickering.
- 5, Cancel the signal succeed , press the up/down/stop of remote control to test working or not.

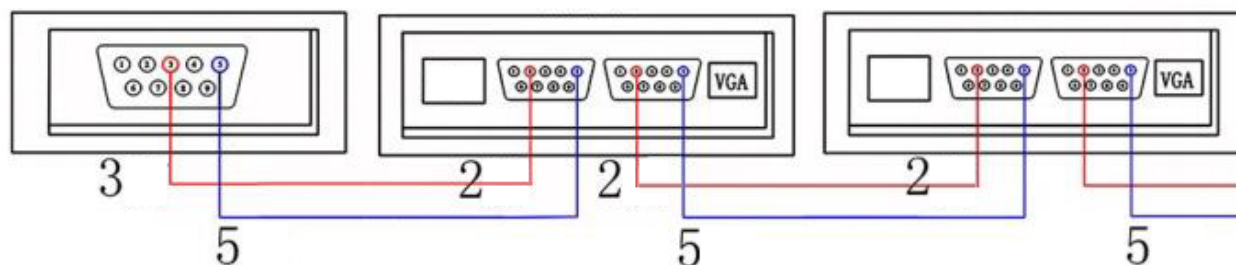
C, RS232 Control

RS232 controller

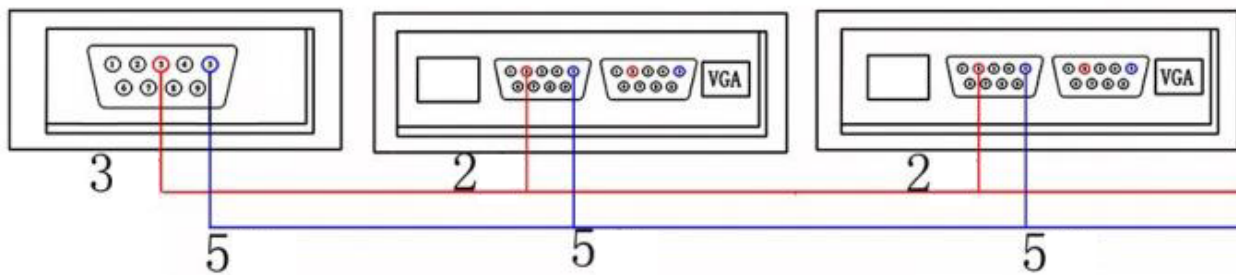
① Connection for RS232:

Lift Machine RS232	Computer Serial RS232
2 RXD Receive	3 TXD Transmit
5 SGND Signal Ground	5 SGND Signal Ground

If using RS232 central control directly without signal amplifier, use the wire of RS232 to connect each unit lift, just series connection.



If using signal amplifier, use the wire of RS232 to connect signal amplifier, then use amplifier to connect with each unit lift, just like parallel connection.



②Set up RS232

baud rate	2400/9600
data length	8
parity checking	N
stop bit	1

③Central Control Code

There is a acquiescent hex code which could control fully up or down:

FF 10 11 00 DD FF 10 11 00 DD FF 10 11 00 DD FF 10 11 00 DD ----fully up

FF 10 11 00 EE(as same as above, repeat 4 or 5 times) -----fully down

FF 10 11 00 CC(as same as above, repeat 4 or 5 times) -----fully stop

④Set up new code

Except the acquiescent hex code, machine still cold set another new control code. Each machine could set up 5 codes.

Please set up new control code as below steps:

1, Set up RS232 serial port according to above setting

2, Connect all wires according to above connection.

3, Write down her code (learning code) on the software of Serial control. FF 10 11 01 AA FF 10 11 01 AA FF 10 11 01 AA

FF 10 11 01 AA. 01 stand for machine, could set up 02, 03, 04....if there are many units machines. Note: Many units machines learn the same control code that means these units machines are in the same grouping, could mounting up and down at the same time.... Don't send it out after wrote the hex code.

4, Press the Up and Stop button at the same time and last about 1 minute. Loosen the two button and send out serial control software hex code immediately once the indicator light of machine start to flicker under frequency of 1pcs/second. The setting of control code is success if the indicator light stop flickering after receiver the code.

⑤control the control code

The machine could control by RS232 after set up the control code. Control the code is as below :

FF 10 11 00 DD..... (Repeat 5 times)..... up

FF 10 11 00 EE..... (Repeat 5 times)..... down

FF 10 11 00 CC..... (Repeat 5 times)..... down

Clear up the control code:

Press UP and STOP button on the touch control panel at the same time, the indicator light of machine will flicker from slow to fast. Loosen the two buttons once the indicator light is flickering very fast, and then brief press the UP and STOP button right now at the same time and loosen. Then all the control code had been cleared up.

The acquiescent hex code from factory won't been clear up.

Simple repair

You can follow our below steps to find problem and repair if meet some quality issue.

- A, Check the indicator light of machine is on or off
- B, Open the cover (without port & cable side) of machine by taking screws away.
- C, Check all wires (electric board, motor) are connected, and all wires connecting is tight.
- D, Check the motor is working or not.
- E, Check the wheel gear near motor is working or not.
- F, Check all the screw (motor, wheel gear, electric board) is tight or not
- G, Check the top panel door get stuck or not
- H, Check the assemble and screw of making top panel door
- I, Check electric board is power or not, signal of input/output is working or not

1, Monitor could not come out without any voice.

Check A-B-C-D, change another new motor if motor didn't work

2, Monitor could not come out while hearing the motor is working.

Check A-B-C-D-E-F, screw motor and wheel gear tight

3, The top panel door could not open

Check A-B-C-D-E-F-H, the screw is too tight, make it loose. Or put lubricating oil into the assemble.

4, Monitor could not lift down after lift up on the top panel.

Check E-F, motor and wheel gear get stuck or gear slip. Adjust motor and wheel gear position if gear slip.

5, Monitor could not move forward or move back.

Check D-E, make sure the motor and wheel gear is working.

6, Top panel door could not close when monitor reach bottom.

Check G-H, the screw is too tight, make it loose. Or put lubricating oil into the assemble.

Switch button isn't workable

Open the top panel, find the connector with red, yellow, green, black wires under the switch button, check connector is connected & tight or not.

Remote Control isn't workable

LCD monitor lift come with remote control without battery. Open the back side of remote control by taking screws away, put battery (23A 12V) into the battery case, press the UP/DOWN/STOP button to check it's workable or not. When press the button, the indicator light will be red if battery is workable. Need to re-set up the signal of remote control if battery is workable while could not control the lift up or down. Please read Paper 5 to set up the signal.

The screen is No signal

Check the HDMI/VGA cable is connected & tight or not.

The touch screen could not be touch

Check the USB cable is connected & tight or not. Touch screen is automatic identification for windows 7,8 by connecting with USB. Or install the USB driven again if didn't work. Check the wires of USB touch on electric board is tight or not if it is still unworkable