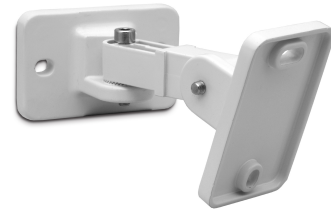


VINCI5BRA-W

Bracket for VINCI4-W & VINCI5-W



The VINCI5BRA is a turn and tilt bracket for the VINCI4 and VINCI5. Ideal to mount the VINCI4 & VINCI5 speakers in restaurants, board rooms.

TECHNICAL SPECIFICATIONS

height in mm	82	width in mm	35
depth in mm	93	colour	black / white
Net weight product (kg)	0,21		

MORE PICTURES

